



# Six-Sigma Training & Project Services

*Driven by Values, Powered by Intellect!*

## Develop Six-Sigma Professionals for Your Organisation

Six-Sigma is fundamentally a business management strategy, developed by Motorola that is gaining worldwide attention and is being embraced by every type of organization for its remarkable success in improving business process efficiency. Originally developed to improve manufacturing systems in reducing process variation and consequently reducing defects to near perfection, it has subsequently been extended, in conjunction with Lean, for any process from manufacturing to transactional and from product to service.

### What are the benefits of Six-Sigma?

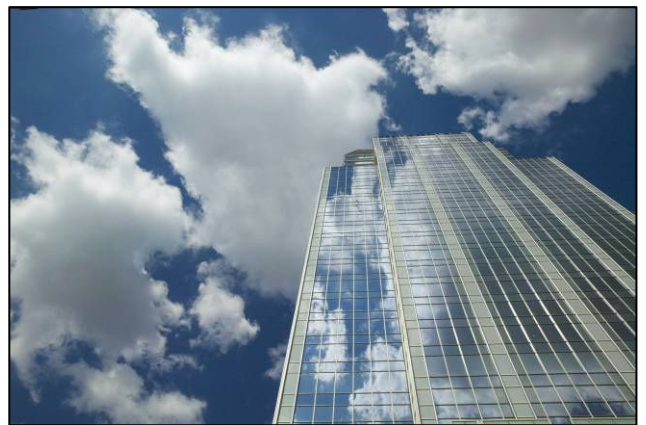
Those organisations that implement Six-Sigma correctly achieve significant benefits that contribute to competitive advantage and to changing the culture in an organisation from reactive problem solving to proactive problem prevention. Specifically the proven benefits include:

For the organisation

- ✓ Bottom line cost savings (5%-20% of turnover p.a.)
- ✓ Improved quality of product or service as perceived by the customer (internal and external customers)
- ✓ Reduction in process cycle times
- ✓ Development of staff skills
- ✓ Common language throughout the organisation
- ✓ World class standard

For the individual

- ✓ Improved knowledge and skills
- ✓ Ability to apply a wide range of tools & techniques
- ✓ A status that is recognised world wide



Six-Sigma **Green** and **Black** belts are well sought after by many organizations for their problem solving prowess and are highly respected in all business sectors. According to the Six-Sigma Academy, **Black** Belts save companies approximately \$230,000 per project and can complete four to 6 projects per year. General Electric (GE), one of the most successful companies implementing Six-Sigma, has estimated benefits on the order of \$10 billion during the first five years of implementation. GE first began Six-Sigma in 1995 after Motorola and Allied Signal blazed the Six-Sigma trail. Since then, thousands of companies around the world have discovered the far reaching benefits of Six-Sigma.

### Vative Six-Sigma services:

Vative offer a comprehensive range of Six-Sigma training and project implementation services.

Our **Black Belt Six-Sigma Coaches** and Project Managers allow us to service any prospective client needs, from smaller scale **Green Belt** Projects to larger scale **Black Belt** projects.

Our vast range of experiences and capabilities allow us to apply the tools, techniques and methods of Six-Sigma across all industries covering projects of all sizes and scope. We have the capacity and capabilities to service all clients across Australia and New Zealand and Asia.

To find out how Vative can support your Business Improvement initiatives, please contact us directly, and one of our Six-Sigma Coaches will help guide you through how Six-Sigma can be applied to your organization and what are the realistic benefits your organization and its people can achieve.



Phone: +61 3 9560 5515

Email: [info@vative.com.au](mailto:info@vative.com.au)

Websites: [www.six-sigma.com.au](http://www.six-sigma.com.au)  
[www.vative.com.au](http://www.vative.com.au)

Australia

New Zealand

Asia



# Six-Sigma Training & Project Services

*Driven by Values, Powered by Intellect!*

Vative, in collaboration with the internationally renowned **Motorola University**, are proud to present to clients striving for Operational and Business excellence, the benchmark Green and Black Belt Six-Sigma training and certification program.



## Six-Sigma **Green Belt** Program

### Program Candidates:

**Green Belts** who are groomed in the Six-Sigma methodology help cascade Six-Sigma approaches and techniques throughout your organization. They are employees at all levels who serve as high-performing team members on Black Belt project teams – or as leaders on projects.

### Course Overview:

The **Green Belt** Program provides participants with an overview of Six-Sigma as well as key concepts associated with effective project teams. **Green Belts** receive a subset of the more comprehensive **Black Belt** curriculum.

### Green Belts learn:

- ✓ a structured problem-solving methodology for addressing business improvement projects
- ✓ intermediate-level quality tools within that methodology
- ✓ how to generate bottom-line financial results

The program focuses on the DMAIC model for process improvement and the relevant intermediate-level statistical and graphical tools within that model.

### Program Length:

Five days

### Green Belt Certification:

We offer the option of formal **Green Belt** certification. It requires that your **Green Belt** candidates complete training, pass an exam, and demonstrate results on one improvement project.

### Location:

This program is available either as open enrolment training at a Motorola approved site or as onsite training at a location of your choice.



## Six-Sigma **Black Belt** Program

### Program Candidates:

**Black Belts** are experts groomed in the Six-Sigma methodology and advanced statistical tools. They can come from all functions of your organization. Although candidates do not need to be statisticians, they need to be willing to use statistical tools to apply Six-Sigma.

### Course Overview:

Since a key role for Six-Sigma **Black Belts** is to effectively lead project teams, our program prepares your candidates to do just that. The Motorola Six-Sigma **Black Belt** program gives your candidates the skills and knowledge they need for the exceptional leadership of business improvement projects. Upon completing each segment of training, participants immediately apply concepts and tools taught in training to their real-time improvement projects.

### Black Belts learn:

- ✓ the DMAIC model for process improvement
- ✓ statistical tools and techniques to make fact-based decisions
- ✓ detailed insights and knowledge of Minitab software functions

### Program Length:

Four weeks delivered over a four-month time frame.

### Black Belt Certification:

We offer the option of formal **Black Belt** certification. It requires that your **Black Belt** candidates complete training, pass an exam, and demonstrate results on improvement projects.

### Location:

This program is available either as open enrolment training at a Motorola site or as onsite training at a location of your choice.

To find out more, please contact Vative directly and one of our Six-Sigma Coaches will provide you with all the information you will require to start your organisations journey down the Six-Sigma path.



**MOTOROLA UNIVERSITY**

Phone: +61 3 9560 5515

Email: [info@vative.com.au](mailto:info@vative.com.au)

Websites: [www.six-sigma.com.au](http://www.six-sigma.com.au)  
[www.vative.com.au](http://www.vative.com.au)

Australia

New Zealand

Asia